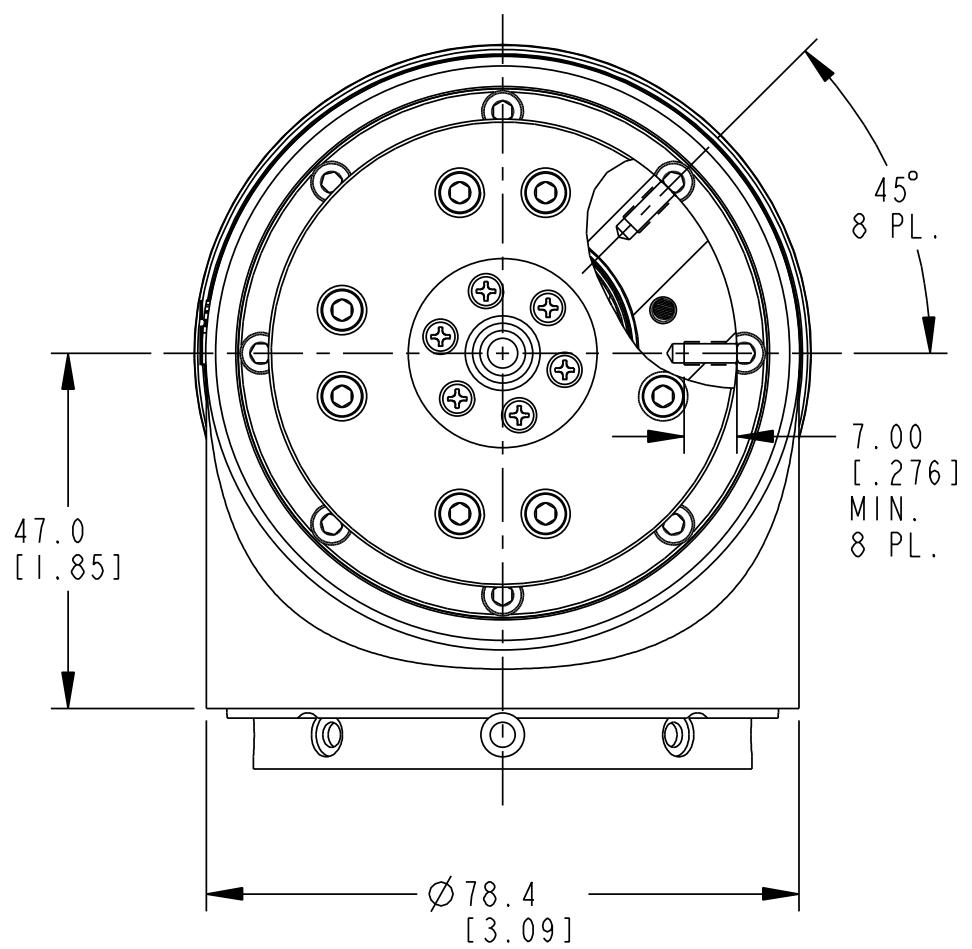
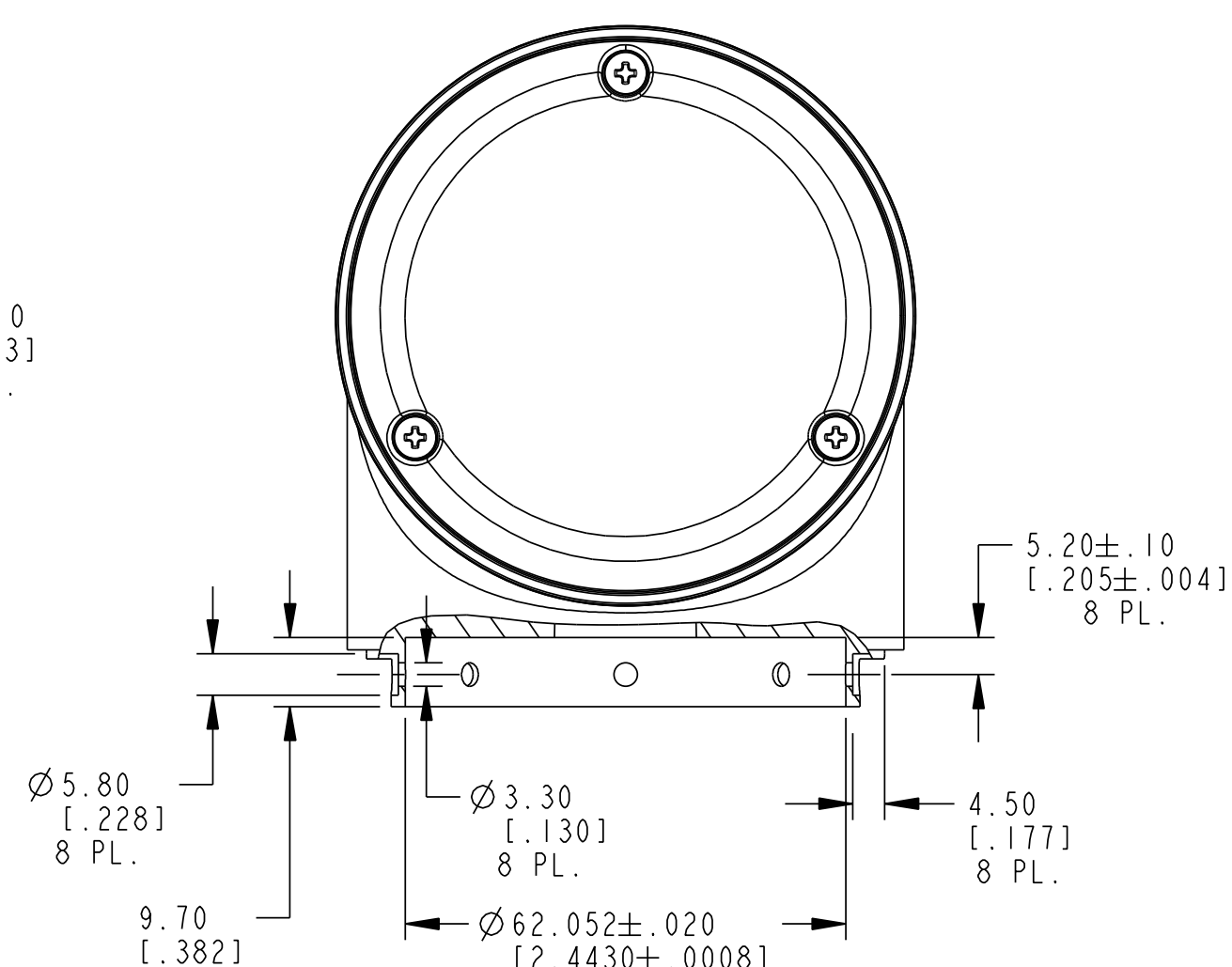
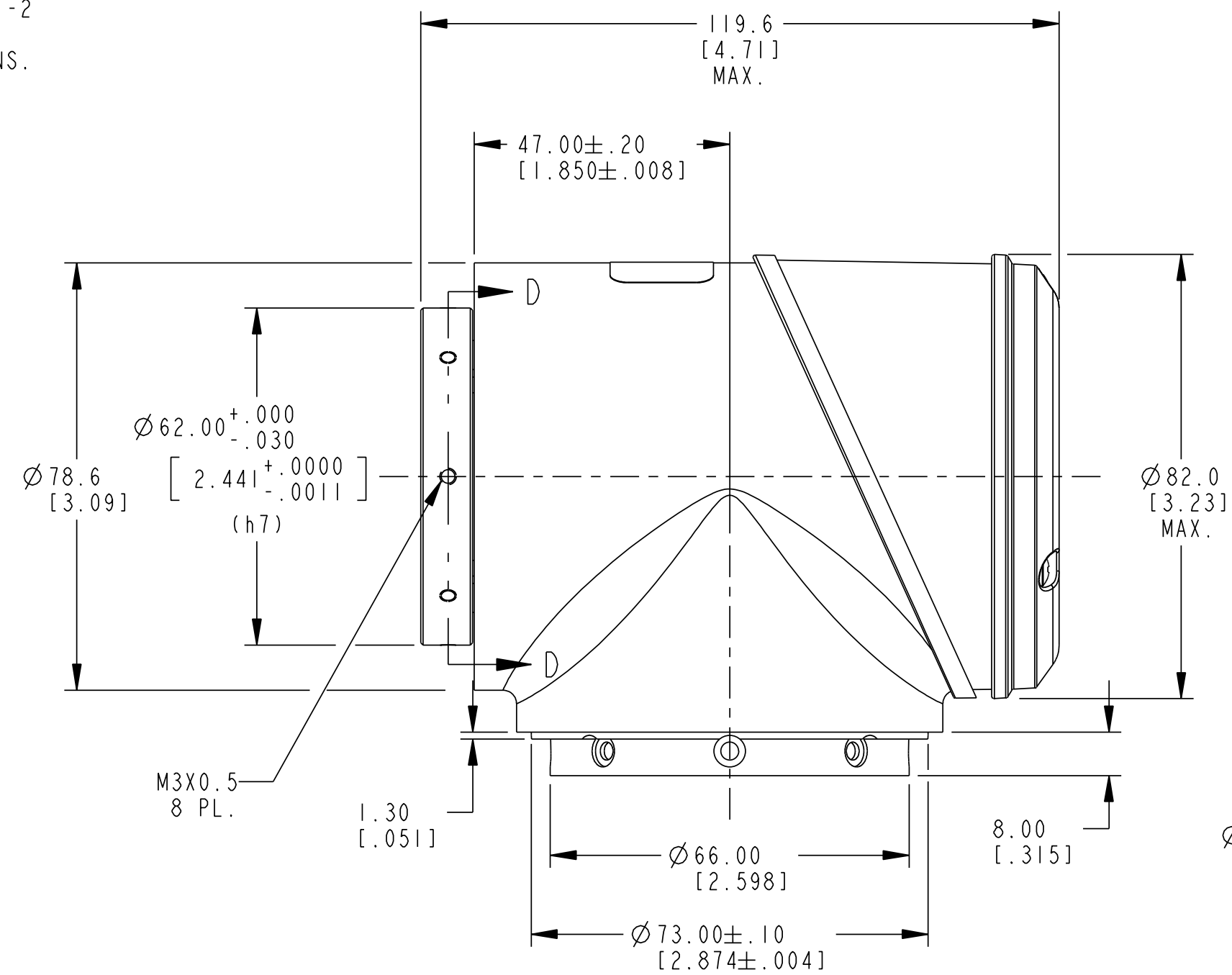


REVISION HISTORY				
REV	ECO NUMBER	DESCRIPTION	DATE	APP'D

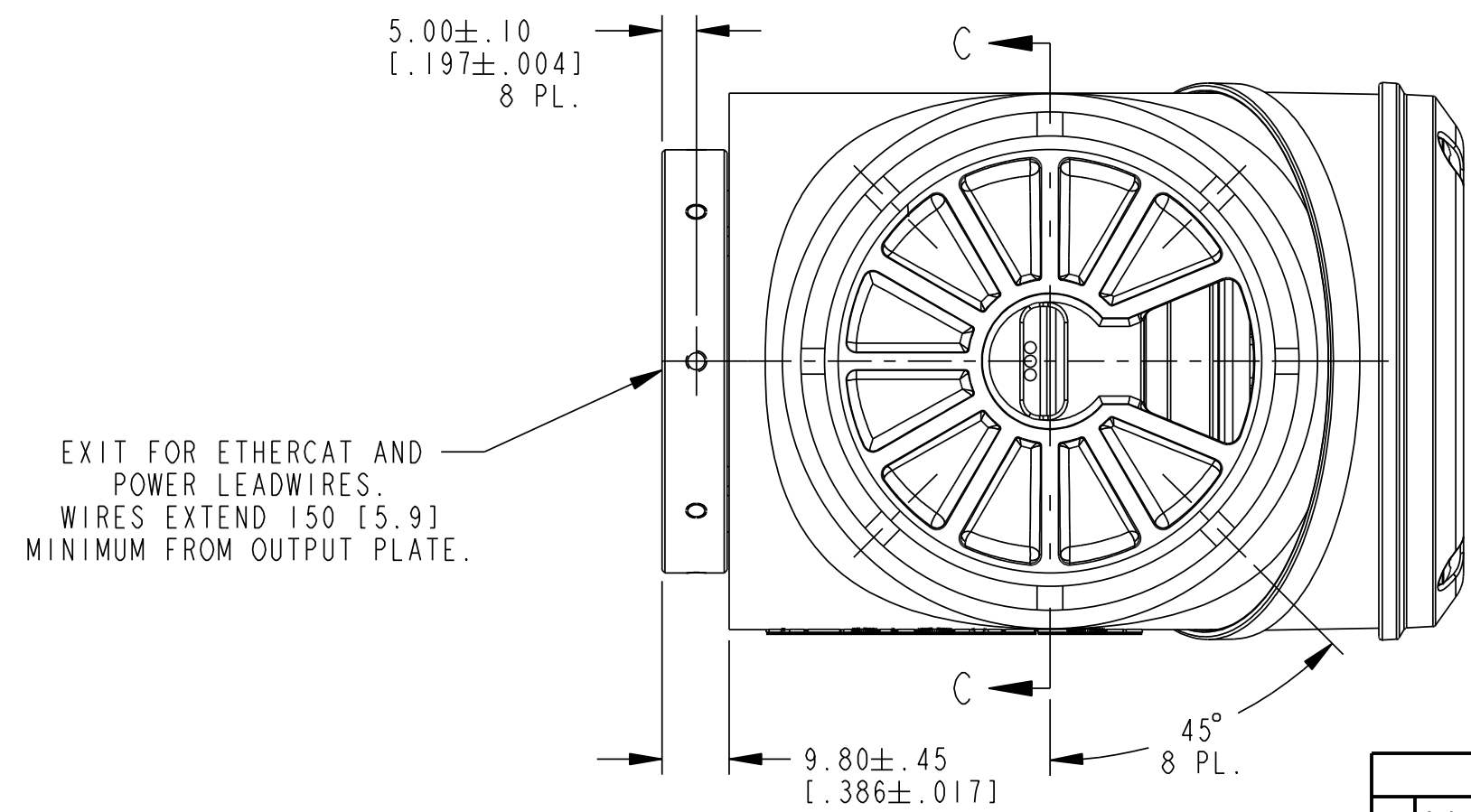
- NOTES:
- SIZE 14 PITCH HARMONIC GEAR WITH 101:1 RATIO
 - THE FOLLOWING PARTS (TO BE ORDERED SEPARATELY AS PART# RGM14-CUST-KIT) ARE REQUIRED FOR CONNECTION TO ANOTHER JOINT OF THE SAME SIZE TO ENSURE IP RATING:
 - (1) PLASTIC SEAL RING
 - (1) RUBBER SEAL BAND
 - (8) M3X0.5 X 8MM LONG SOCKET HEAD CAP SCREWS
 - TORQUE M3 SCREWS IN OUTPUT PLATE TO 1.8Nm [16 IN-LB] AND USE REMOVABLE THREADLOCKER ON SCREWS.
 - ETHERCAT CONNECTORS: TE CONNECTIVITY 5-292271-2
 - POWER FERRULES: PHOENIX 3201576
 - SEE RGM USER MANUAL FOR ELECTRICAL CONNECTIONS.



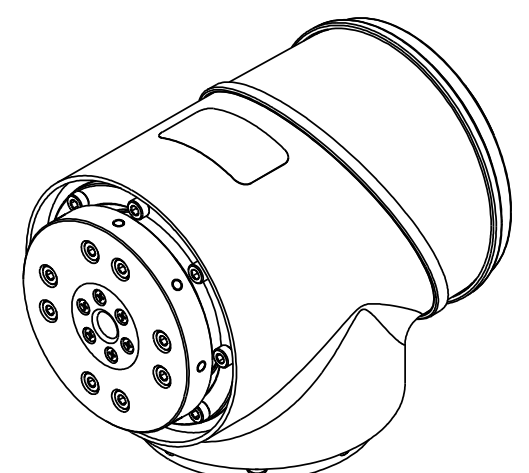
SECTION D-D



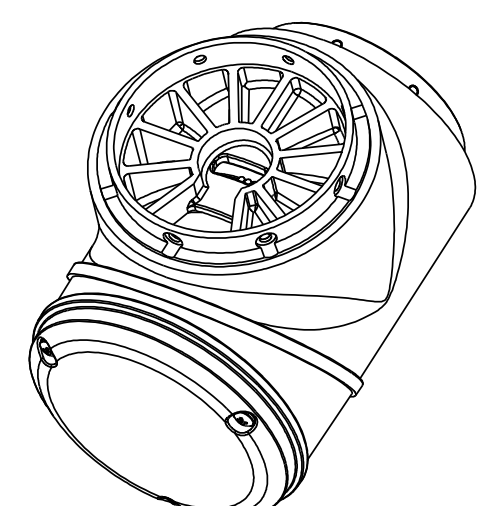
SECTION C-C



EXIT FOR ETHERCAT AND POWER LEADWIRES. WIRES EXTEND 150 [5.9] MINIMUM FROM OUTPUT PLATE.



SCALE 1:2



SCALE 1:2

This drawing contains PROPRIETARY information and is the property of KOLLMORGEN. This drawing may not be copied or used without prior written approval of KOLLMORGEN	
INTERPRET GEOMETRIC SYMBOLS PER ASME Y14.5M-1994	
Pro/E Model File Rev	PO
Pro/E Instance Name	RGM14_MAIN.ETHERCAT
Pro/E Drawing Name	971153
Pro/E Model Type	ASSEM
Pro/Engineer Drawing	

SIGNIFICANT PRODUCT CHARACTERISTIC	UNLESS OTHERWISE SPECIFIED: DIMENSIONS APPLY BEFORE COATINGS REMOVE ALL SHARP BURRS AND BREAK ALL SHARP EDGES		KOLLMORGEN Design Control Location: 201 West Rock Road Radford, Virginia 24141 United States of America			
	MILLIMETER VALUES: ANGULAR TOLERANCE: ±1° X DEC. PLACE: ±.4mm XX DEC. PLACE: ±.13mm	[INCH] VALUES: ANGULAR TOLERANCE: ±1° XX DEC. PLACE: ±.015° XXX DEC. PLACE: ±.005°				
CRITICAL PRODUCT CHARACTERISTIC	DO NOT SCALE DRAWING USE DIMENSIONS ONLY ALL DIMENSIONS ARE MM [INCH] INCH DIMENSIONS IN BRACKETS [] ARE FOR REFERENCE ONLY		SIZE	CAGE CODE	DWG. NO.	REV
THIRD ANGLE PROJECTION		DRAWN BY: BW CHECKED BY: - APPROVED BY: -	DATE: Dec-10-18	C	971153	-
			SCALE: 1:1	SHEET 1 OF 1		

MILLIMETERS

DWG. NO. 971153