

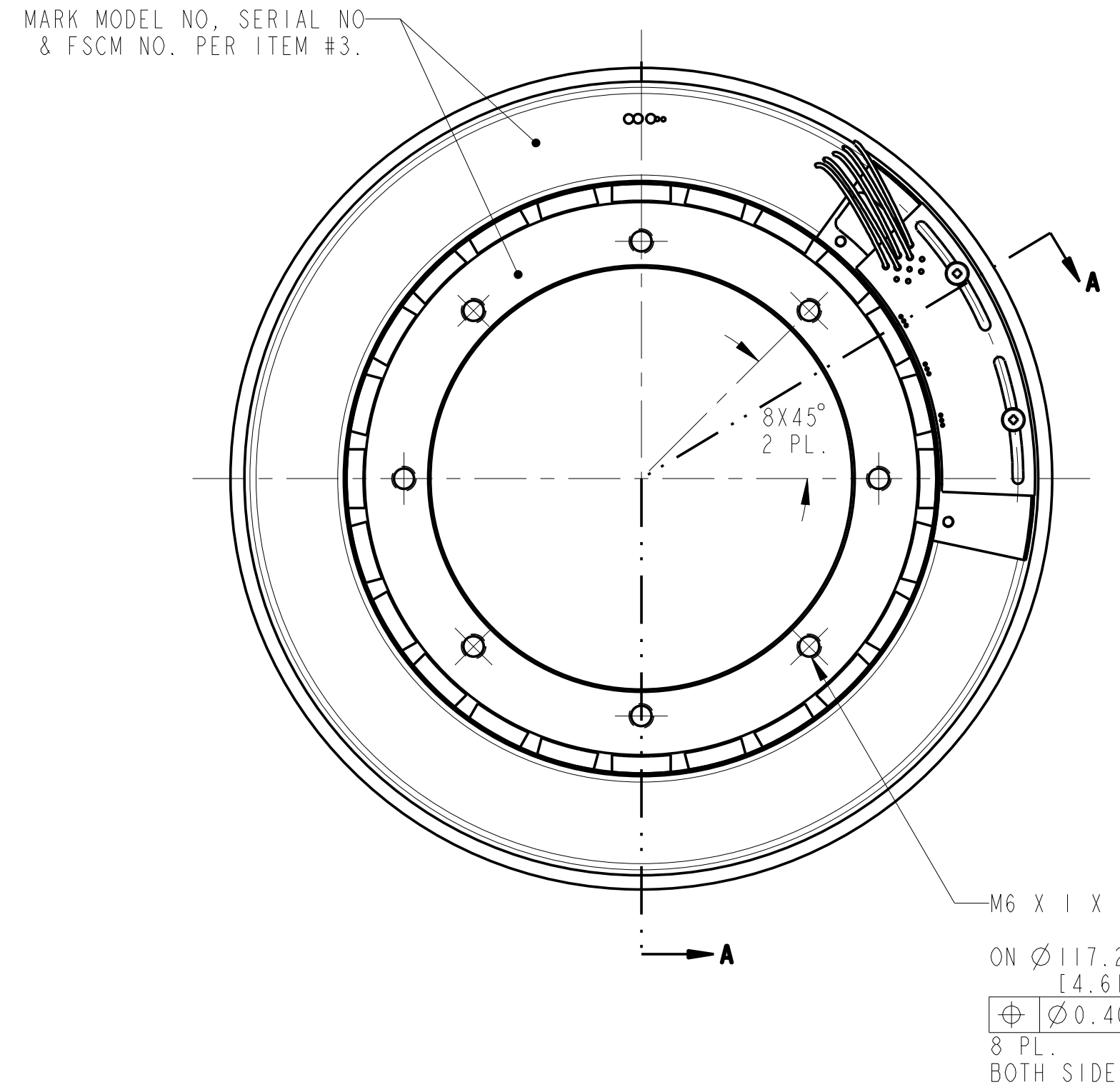
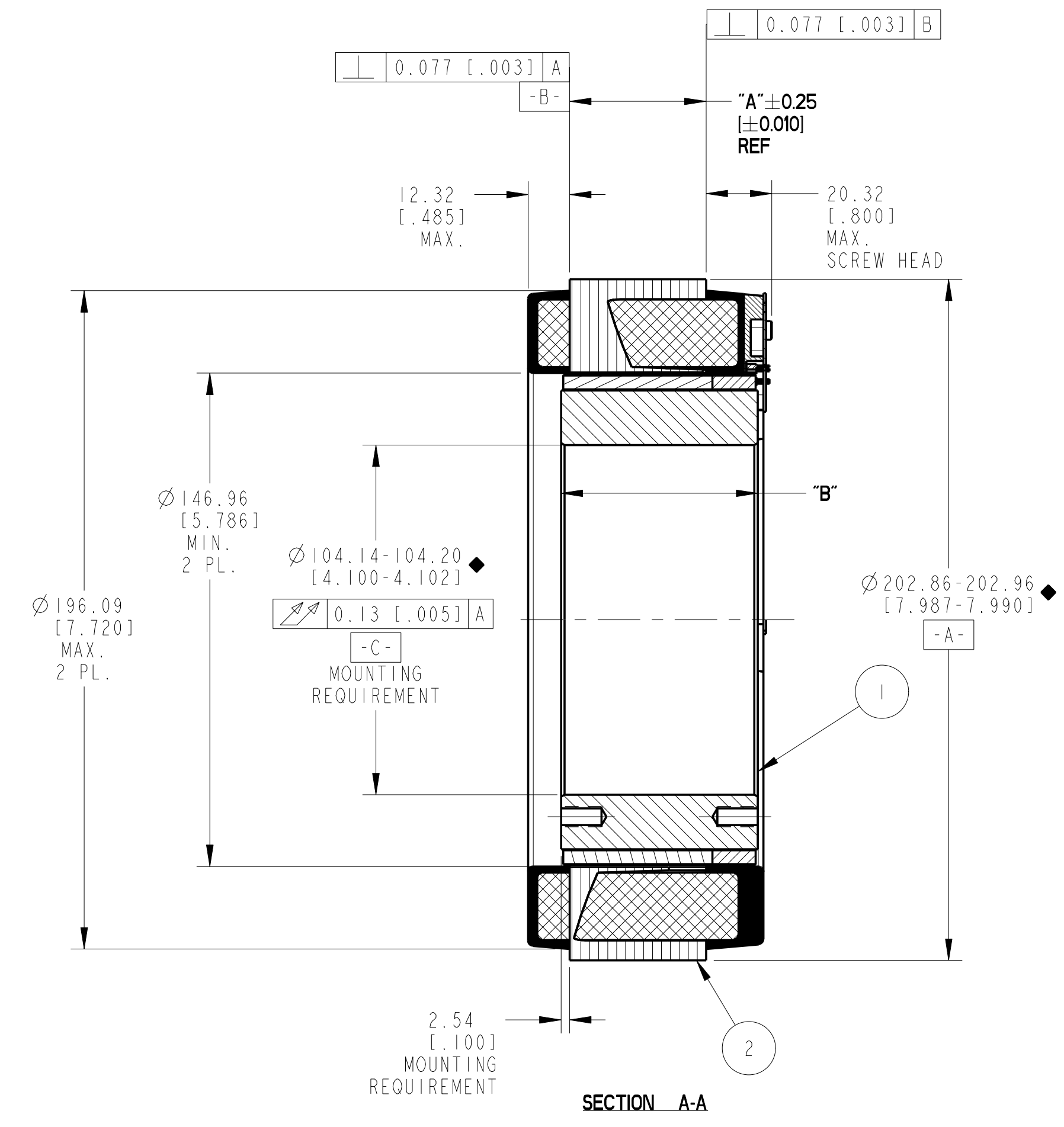
REVISION					
REV	ECN NO.	DESCRIPTION	DATE	APPROVED	
A	R01.14145	SEE ECO	L&T	20-Jan-11	LW
B	R01.14387	SEE ECO	L&T	15-Apr-11	LW
C	R01.15070	SEE ECO	L&T	17-Jul-12	LW
D	R01.15597	SEE ECO	ALM	8/8/13	KLR

- NOTES:
- FOR A.C.C.W. ROTATION, AS VIEWED FROM LEAD END, ENERGIZE PER EXCITATION SEQUENCE BELOW.
 - MOTOR SUPPLIED AS TWO SEPERATE COMPONENTS, ARMATURE & SENSOR ASSY AND FIELD ASSY.
 - R = 1.5k OHMS APPROXIMATELY (CUSTOMER SUPPLIED).
 - EMF-UV, EMF-VW, AND EMF-WU IS BACK EMF OF MOTOR PHASES UV, VW, AND WU ALIGNED WITH SENSOR OUTPUT SHOWN FOR CCW ROTATION ONLY.
 - MINIMUM MOUNTING SURFACE FROM 196.85MM [7.750] TO 202.94MM [7.990] BOTH SIDES.
 - DIMENSIONS IN BRACKETS [] ARE ENGLISH UNITS FOR REFERENCE ONLY.
 - NO ANGULAR RELATIONSHIP BETWEEN MOUNTING HOLES OF EITHER SIDE OF ROTOR.
 - RoHS (DIRECTIVE 2002/95/EC AND AMMENDMENTS) COMPLIANCE REQUIRED.

MOTOR LEADS:
 #16 AWG, TEFLON INSULATED, U.L. 1199
 3 LEADS, 400MM [15.75"] MIN
 1-BLUE 1-BROWN 1-VIOLET

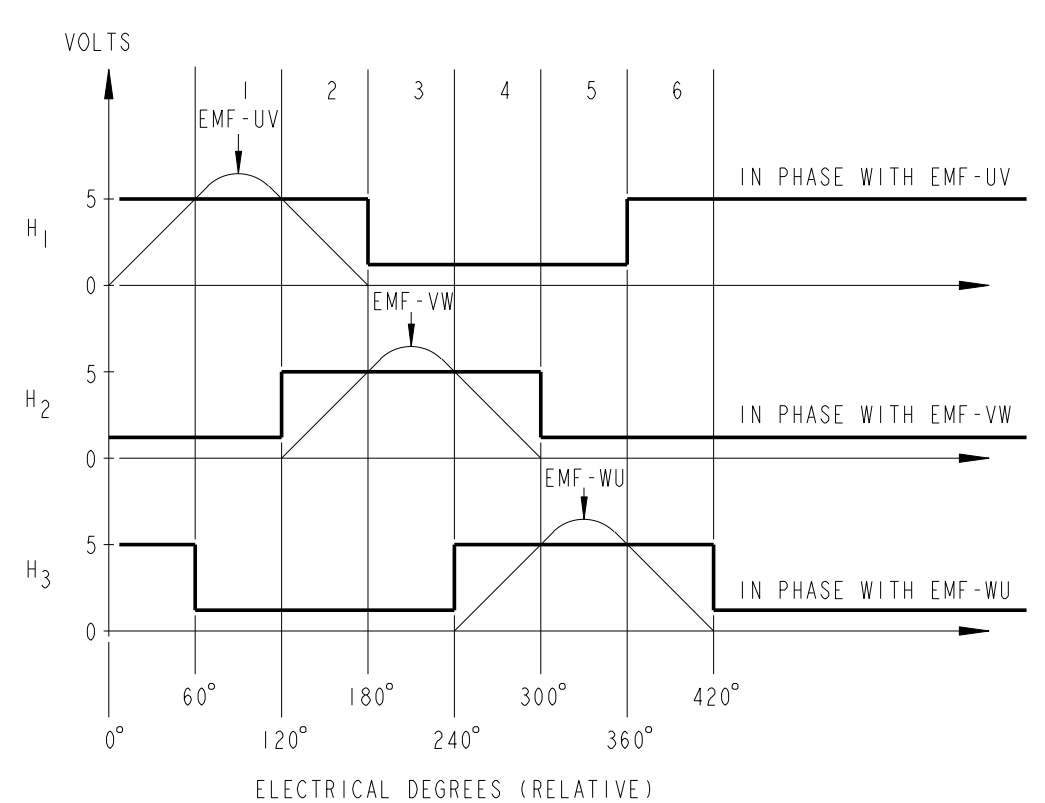
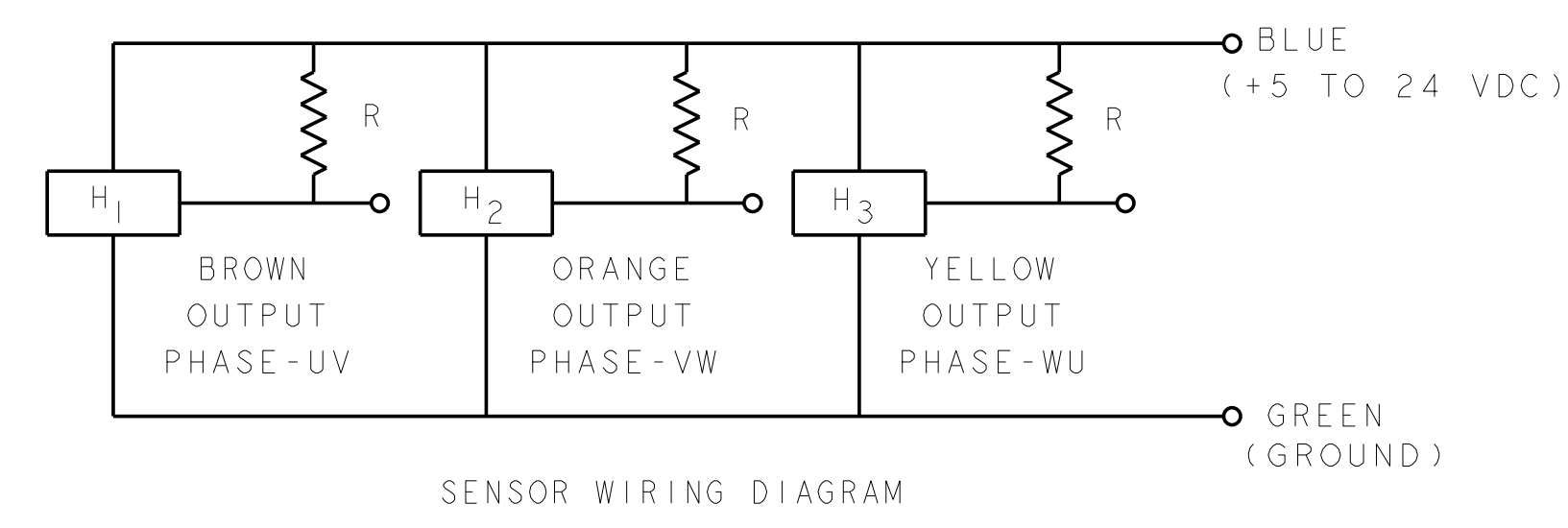
THERMISTOR LEADS:
 #26 AWG, TEFLON INSULATED,
 2 LEADS, 400MM [15.75"] MIN
 1-BLUE 1-RED

SENSOR LEADS:
 #26 AWG, TEFLON COATED PER MIL-W-22579/11
 5 LEADS, 400MM [15.75"] MIN
 1-BLUE, 1-GREEN 1-BROWN 1-ORANGE 1-YELLOW



POWER CONNECTION			
STEP	PHASE "U" BLUE	PHASE "V" BROWN	PHASE "W" VIOLET
1	+	-	
2	+		-
3		+	-
4	-	+	
5	-		+
6		-	+

EXCITATION SEQUENCE TABLE



MODEL NUMBER	ARMATURE ASSY H.V. INSULATION	ARMATURE ASSY STD. INSULATION	FIELD ASSEMBLY	DIM "A"	DIM "B"
KBMS-57X01	946446/01X	946447/01X	946448/01	20.32 [0.800]	38.23 [1.505]
KBMS-57X02	946446/02X	946447/02X	946448/02	40.64 [1.600]	58.54 [2.305]
KBMS-57X03	946446/03X	946447/03X	946448/03	81.79 [3.220]	99.44 [3.915]
KBMS-57X04	946446/04X	946447/04X	946448/04	123.82 [4.875]	141.98 [5.590]
KBMS-57X05	946446/05X	946447/05X	946448/05	166.37 [6.550]	184.53 [7.265]

THIS DOCUMENT IS ONLY FOR USE BY THE INTENDED RECIPIENT AND CONTAINS KOLLMORGEN CONFIDENTIAL INFORMATION

Pro/E Instance Name: KBMS1.0UTLINE.946445
 Pro/E Drawing Name: 946445
 Pro/E Model Type: ASSEM
 Pro/Engineer Drawing

3	AR	IM-2709	MARKING PROCEDURE
2	I	SEE TABLE	ARMATURE ASSEMBLY
1	I	SEE TABLE	FIELD ASSEMBLY
ITEM	QTY	IDENTIFYING NO.	DESCRIPTION
LIST OF PARTS			
UNLESS OTHERWISE SPECIFIED: REMOVE ALL SHARP BURRS AND BREAK ALL SHARP EDGES X DECIMAL PLACES ±.4 [0.015] XX DECIMAL PLACES ±.13 [0.005] ANGULAR DIMENSIONS ±1°			KOLLMORGEN Inland Motor INLAND MOTOR 501 FIRST STREET RADFORD, VIRGINIA 24141
DO NOT SCALE DRAWING. USE DIMENSIONS ONLY. ALL DIMENSIONS ARE IN MILLIMETERS UNLESS OTHERWISE SPECIFIED. DIMENSIONS IN BRACKETS [] ARE IN INCHES AND ARE FOR REFERENCE ONLY. INTERPRET GEOMETRIC SYMBOLS PER ANSI Y14.3M-1992			
METRIC DRAWING SIGNIFICANT PRODUCT CHARACTERISTIC CRITICAL PRODUCT CHARACTERISTIC		DRAWN BY: LZF CHECKED BY: LW APPROVED BY: AG	DATE: 10-Jul-09 DATE: 16-Sep-09 DATE: 16-Sep-09
FSCM 11384		SIZE: D DWG. NO.: 946445	REV: D
SCALE: 1:000		JOB NO.:	SHEET 1 OF 1