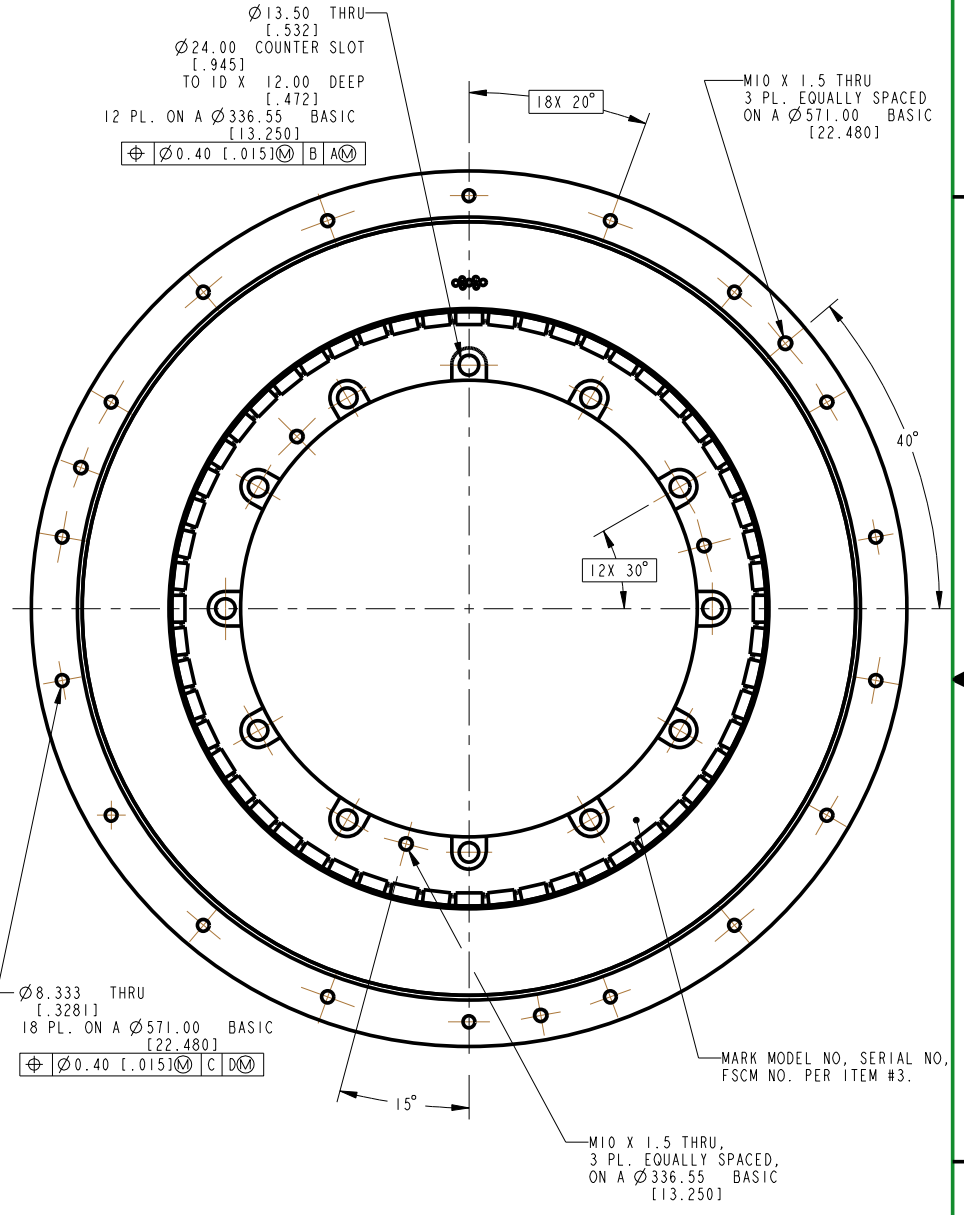
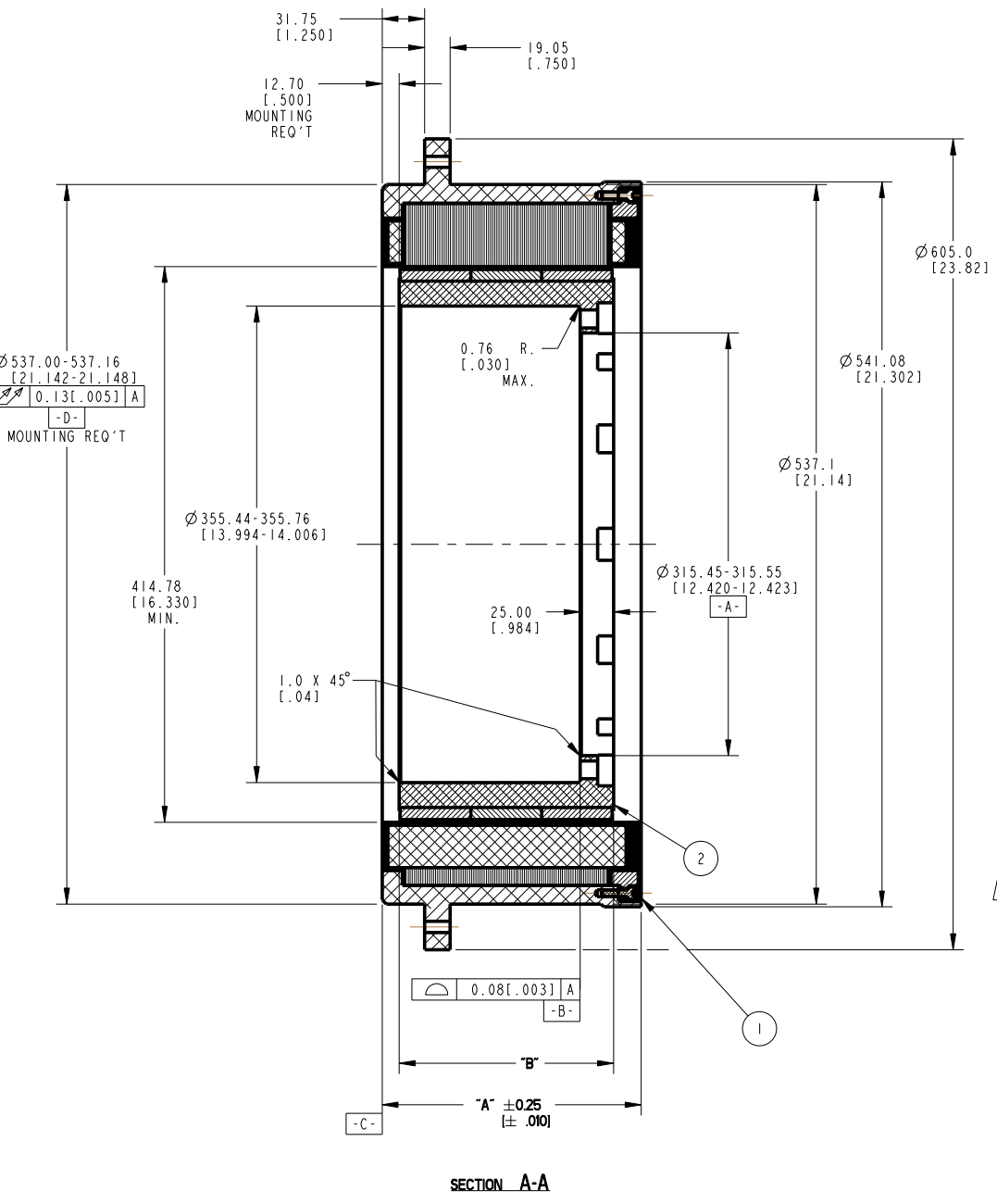
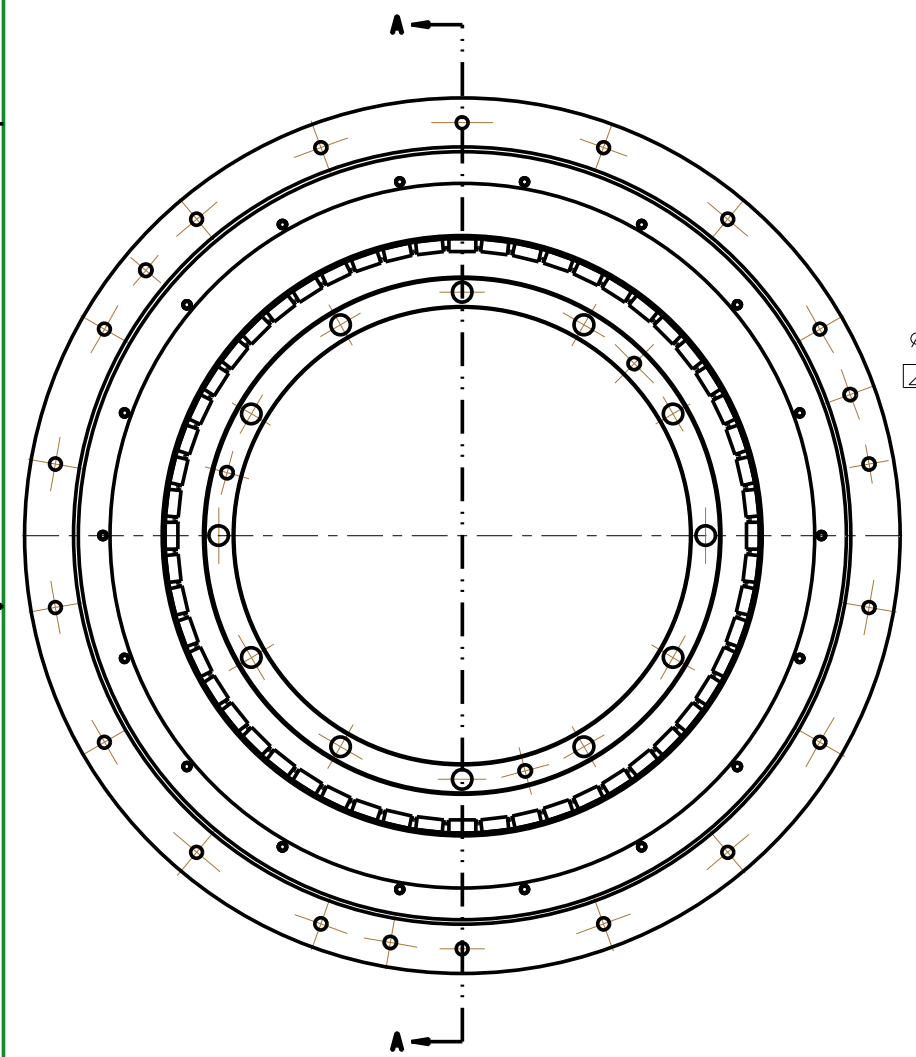


| REVISION |           |             |           |          |
|----------|-----------|-------------|-----------|----------|
| REV      | ECN NO.   | DESCRIPTION | DATE      | APPROVED |
| A        | R01-13452 | SEE ECO     | 3-04-2010 | T&B      |

NOTES:  
 1. FOR A C.C.W. ROTATION, AS VIEWED FROM LEAD END, ENERGIZE PER EXCITATION SEQUENCE BELOW.  
 2. MOTOR SUPPLIED AS TWO SEPARATE COMPONENTS, ARMATURE ASSEMBLY, AND FIELD ASSEMBLY.  
 3. DIMENSIONS IN BRACKETS [ ] ARE ENGLISH UNITS FOR REFERENCE ONLY.  
 4. HIGH STRENGTH ALLOY STEEL BOLTS MUST BE USED FOR MOUNTING. (METRIC CLASS 12.9, ASTM GRADE A574)

MOTOR LEADS:  
 #10 AWG, TEFLON INSULATED, U.L. 1199  
 3 LEADS, 900 mm [35"] MIN  
 1- BLUE 1- BROWN 1- VIOLET

THERMISTOR LEADS:  
 #26 AWG, TEFLON INSULATED  
 4 LEADS, 900 mm [35"] MIN  
 2- BLUE 2- RED



SECTION A-A

THIS DOCUMENT IS ONLY FOR USE BY THE INTENDED RECIPIENT AND CONTAINS KOLLMORGEN CONFIDENTIAL INFORMATION

| STEP | POWER CONNECTION |                 |                  |     |
|------|------------------|-----------------|------------------|-----|
|      | PHASE "U" BLUE   | PHASE "V" BROWN | PHASE "W" VIOLET |     |
| 1    | (+)              | (-)             | (-)              | (-) |
| 2    | (+)              | (-)             | (-)              | (-) |
| 3    | (-)              | (+)             | (-)              | (-) |
| 4    | (-)              | (+)             | (-)              | (-) |
| 5    | (-)              | (-)             | (+)              | (-) |
| 6    | (-)              | (-)             | (+)              | (-) |

EXCITATION SEQUENCE TABLE

| MODEL NUMBER | ARMATURE & HOUSING ASSEMBLY | FIELD ASSEMBLY | DIM "A"        | DIM "B"        |
|--------------|-----------------------------|----------------|----------------|----------------|
| KBM-163X01   | 946672/01X                  | 946677/01      | 142.54 [5.612] | 106.93 [4.210] |
| KBM-163X02   | 946672/02X                  | 946677/02      | 193.34 [7.612] | 160.02 [6.300] |
| KBM-163X03   | 946672/03X                  | 946677/03      | 244.14 [9.612] | 213.11 [8.390] |

| ITEM | QTY | IDENTIFYING NO. | DESCRIPTION               |
|------|-----|-----------------|---------------------------|
| 3    | AR  | 1M-2709         | MARKING PROCEDURE         |
| 2    | I   | SEE TABLE       | FIELD ASSEMBLY            |
| 1    | I   | SEE TABLE       | ARMATURE HOUSING ASSEMBLY |

| LIST OF PARTS  |  | INLAND MOTOR  |               |
|--|--|---|---------------|
| UNLESS OTHERWISE SPECIFIED: REMOVE ALL SHARP BURRS AND BREAK ALL SHARP EDGES. X DECIMAL PLACES ± 4 (.015) XX DECIMAL PLACES ± 13 (.005) ANGULAR DIMENSIONS ± 1°  |  | INLAND MOTOR<br>501 FIRST STREET<br>RADFORD, VIRGINIA 24141 |               |
| DO NOT SCALE DRAWING; USE DIMENSIONS ONLY. ALL DIMENSIONS ARE IN MILLIMETERS UNLESS OTHERWISE SPECIFIED. DIMENSIONS IN BRACKETS [ ] ARE IN INCHES AND ARE FOR REFERENCE ONLY. INTERPRET GEOMETRIC SYMBOLS PER ANSI Y14.5M-1982 |  | OUTLINE AND ASSEMBLY<br>KBM-163XXX-X00                      |               |
| SIGNIFICANT PRODUCT CHARACTERISTIC   |  | FSCM  | SIZE DWG. NO. |
| CRITICAL PRODUCT CHARACTERISTIC  |  | 11384   | D 946680      |
|  |  | REV   | A             |
|  |  | SCALE: 0.500  | JOB NO.:      |
|  |  | SHEET 1 OF 1  |               |

Pro/Engineer Drawing